

# Public Engagement Along the KC Streetcar Main Street Extension

The KC Streetcar Main Street Extension Project has been led by the community, for the community. Public engagement played an important role in determining design elements, such as track placement and the locations and names of stops.

COMMUNITY DISCUSSIONS

OPEN HOUSE #1

APRIL 3, 2018

127 ATTENDEES

187 SURVEY RESPONSES

WHAT WE LEARNED:

- Proposed stop locations and transit connections
- Preference for the streetcar to run in a center or outside lane in various sections of the extension

TOP PUBLIC-PREFERRED STOPS:

- 31st Street (5 comments)
- 49th Street/Plaza Library (5 comments)
- Westport Road (4 comments)

BEST-LANE PREFERENCE:

DESIGN ALTERNATIVE	TOTAL
North Section – Outside Running	44
North Section – Center Running	36
Middle Section – Outside Running	56
Middle Section – Center Running	33
South Section – CCROW	73
South Section – Center Running	9

OPEN HOUSE #2

JUNE 5, 2018

96 ATTENDEES

54 SURVEY RESPONSES

WHAT WE LEARNED:

- WHY participants preferred the streetcar run along center or outside lane for the entire extension

OUTSIDE RUNNING	CENTER RUNNING
<div>46 PREFERRED</div> <div>20% referenced business operations (economic development, less disruptive to access/left-hand turns)</div> <div>16% referenced safety (crowded platforms)</div> <div>Accessibility and consistency were both referenced 13%</div> <div>Also noted: better flow for traffic and pedestrians, parking and operations experience</div>	<div>16 PREFERRED</div> <div>38% referenced bicyclist safety</div> <div>31% referenced an ability to dedicate lanes for streetcar, cars and bicyclists</div> <div>Also voted: safety, speed (faster running) and traffic calming</div>

THE COMMUNITY'S VISION

OPEN HOUSE #3

FEB. 21, 2019

116 ATTENDEES

VIRTUAL MEETINGS #1 & 2

APRIL 6 & 7, 2021

175 TOTAL ATTENDEES

DESIGN PLANS UNVEILED:

The project team presented the data collected from the first two open houses and survey results. Participants saw how their impact shaped the design of the Main Street Extension.

DENSITY

31ST ST. STOP

EAST-WEST BIKE STORAGE

CONTINUED KC PROGRESS

ACCESSIBILITY

SUSTAINABILITY

INCREASED ACTIVITY

MINDFUL OF BUSINESS DURING CONSTRUCTION

INTEGRATED APPROPRIATELY

REMAIN FREE

DEDICATED CENTER LANE

EMPLOYMENT OPPORTUNITIES

UMKC TO NORTHLAND

STRENGTHENED BACKBONE

NEIGHBORHOOD CONNECTIONS

ENHANCED TRANSIT SYSTEM

COORDINATED WITH CITY'S BIKE PLAN

WALKABILITY

SAFETY

CONNECTIVITY

CONTINUED GROWTH

At Open Houses #1 & 2, we asked participants to answer the prompt: "My vision for the KC Streetcar Main Street Extension to UMKC is ...". This is what they said.

INFLUENCING THE EXTENSION

10 STAKEHOLDERS

The WORKING GROUP OF STAKEHOLDERS located along the extension MET 4 TIMES during the development phase to help the project team identify potential issues and explore solutions.

30 MEETINGS

At one-on-one STAKEHOLDER MEETINGS, the project team gathered general feedback and asked questions specific to each stakeholder.

38 PRESENTATIONS

Team members attended scheduled meetings of COMMUNITY AND NEIGHBORHOOD GROUPS to increase awareness and gather feedback.

TALKIN' TRACK ALONG THE EXTENSION

SUMMER 2021:

The project team launched The Rail World campaign to spotlight different neighborhoods, businesses and stories along the extension corridor. The team held FOUR in-person Track Talk events to engage with different segments of the project and share updates through ONE virtual Track Talk Takeover on the @KCStreetcar Instagram.

THE RAIL WORLD

KC STREETCAR: STORIES OF THE MAIN STREET EXTENSION

1,800+ Accounts Reached

13,200+ Impressions

125 Content Interactions

WE HEARD YOU: "SAVE OUR STOP" PETITION

370 SIGNATURES

A "Save Our Stop" petition was initiated by the Union Hill neighborhood with support from nearby residents. The petition requested an additional 31st Street Stop along the extension. It was delivered by hand to the KC Streetcar Authority on April 20, 2018, and the 31st Street Stop was included as part of the Final Design Plan.

LETTERS OF SUPPORT

From suggesting additional stops to proposing a visual identity for the stops, 15 organizations, neighborhoods and businesses submitted letters backing the Main Street Extension. The success of this project would not be possible without their support throughout the design process.

Ability KC Board of Directors

BMO Financial Group

Children's Mercy Hospitals & Clinics

Fairfield Inn by Marriott

JE Dunn Construction Company

Kansas City KPS (KCPT)

One Park Place Homeowners Association

Shops at Union Hill

South Plaza Neighborhood Association

Union Hill Properties

Union Hill Homes

Union Hill Neighborhood

Nelson-Atkins Museum of Art

Kemper Museum of Contemporary Art

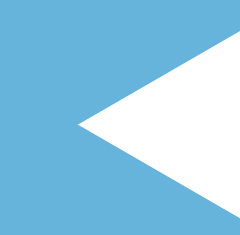
Kansas City Art Institute



# Main St. and Linwood Blvd. Intersection: KC Streetcar Main Street Extension



Present Day Midtown at the  
Main Street and Linwood  
Boulevard Intersection



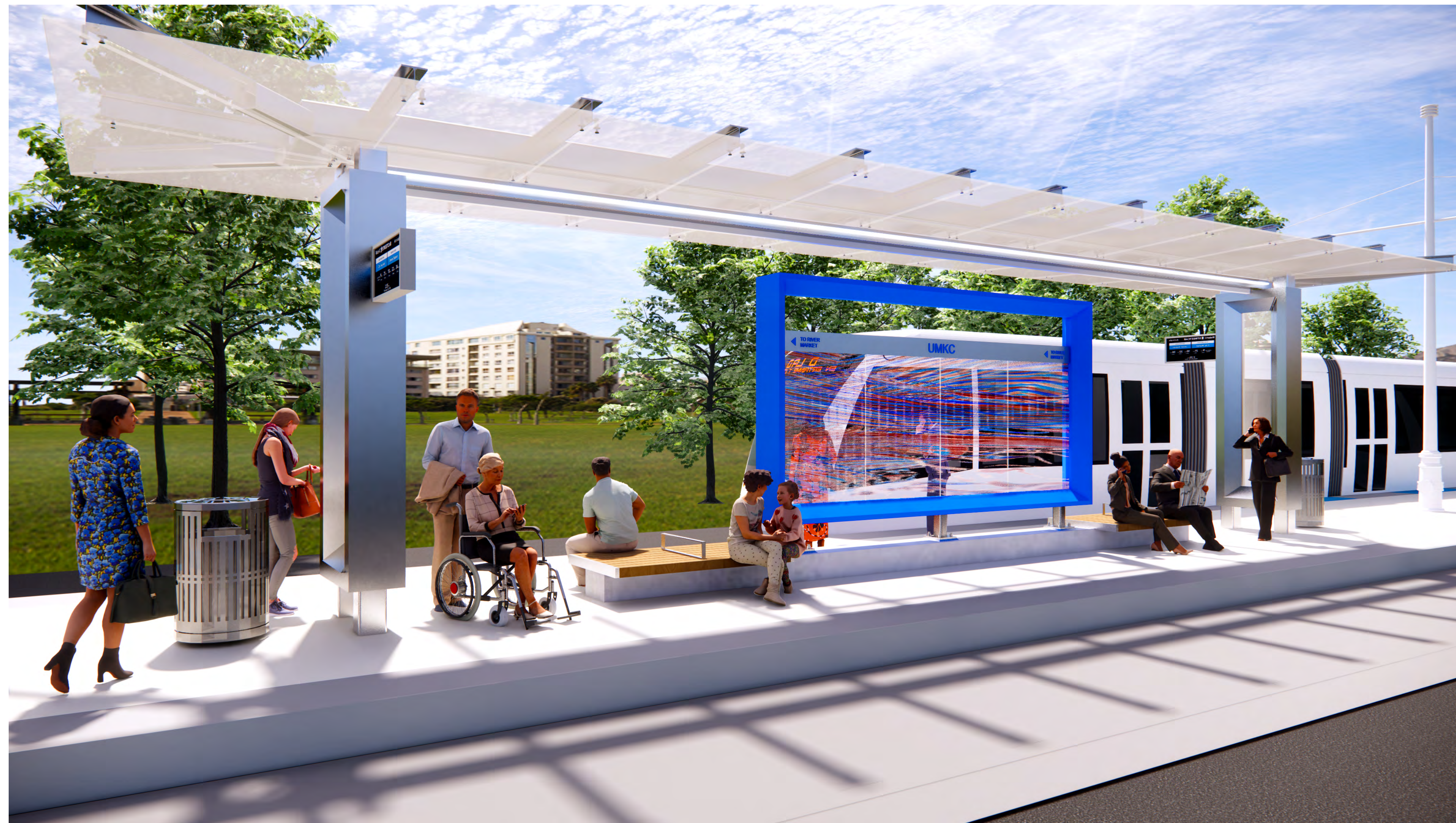
## Future Midtown Improvements at the Main Street and Linwood Boulevard Intersection

- Extend curb bump outs
- Green infrastructure elements
- Eliminate westbound slip lane on Linwood Boulevard
- Shorter pedestrian crossings
- Roadway adjustments along Main Street





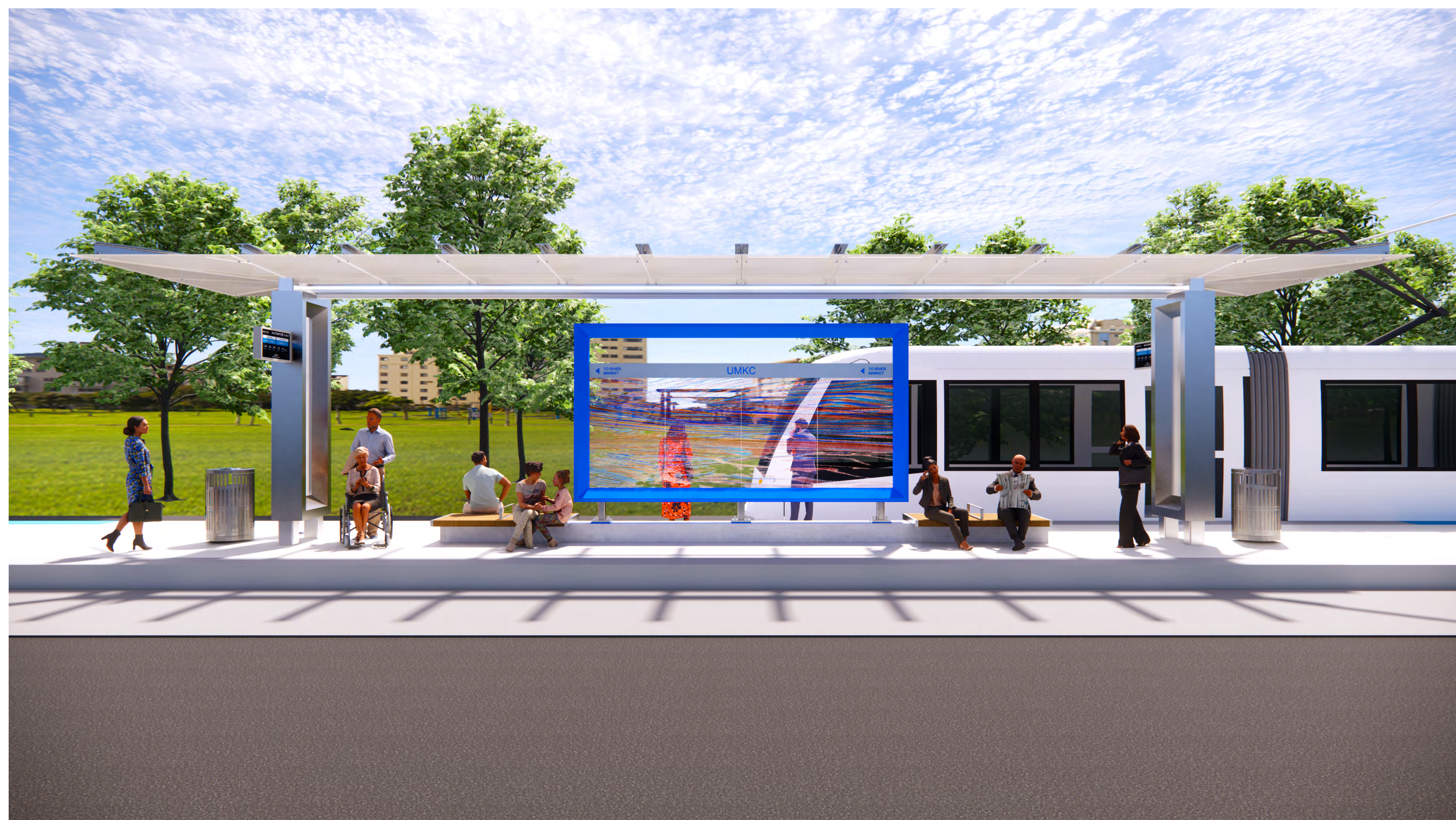
# UMKC Station Stop: KC Streetcar Main Street Extension



UMKC Station Stop View 1



UMKC Station Stop Aerial Rendering



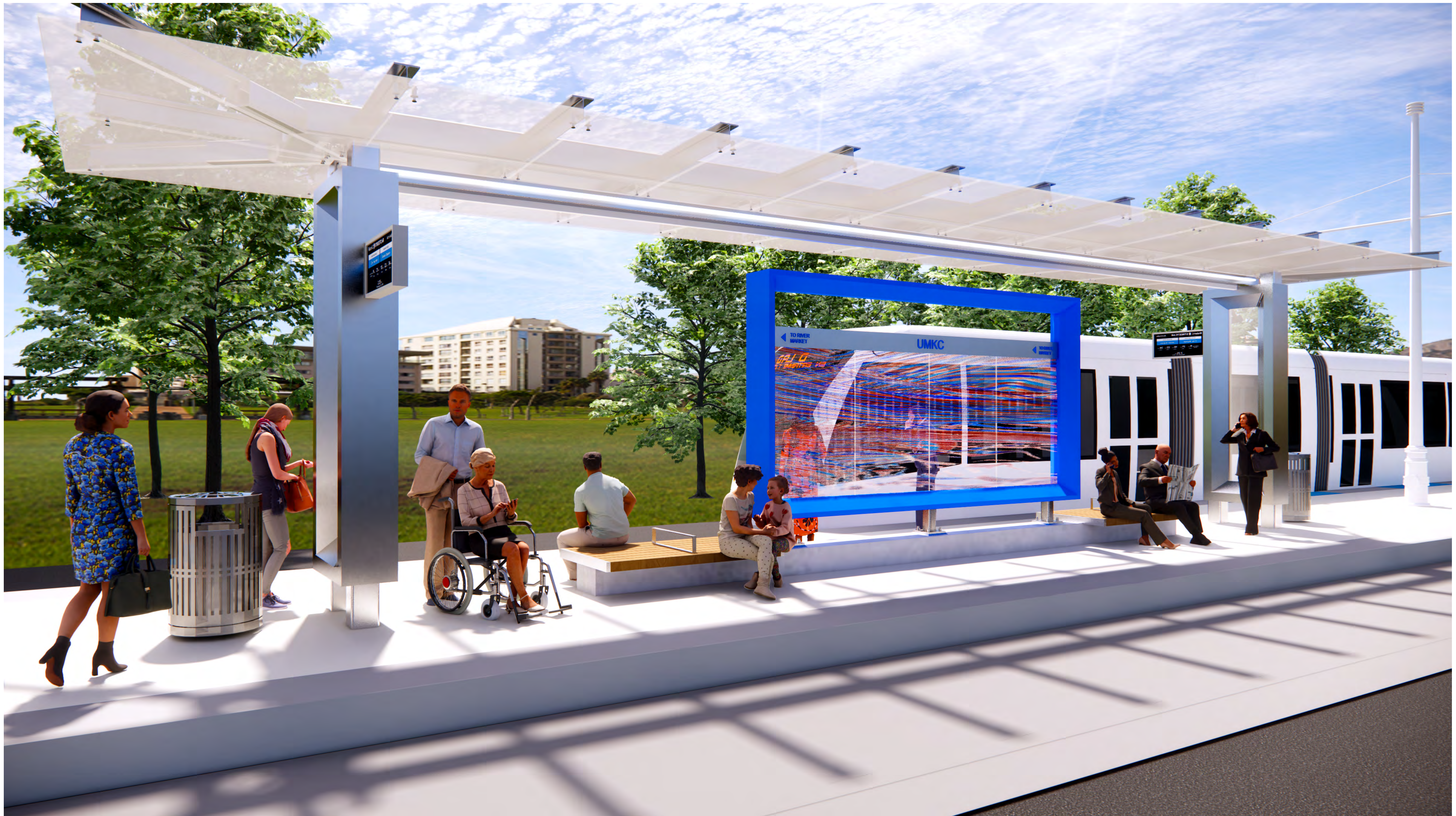
UMKC Station Stop View 2



UMKC Station Stop Ground Rendering



# UMKC Station Stop: KC Streetcar Main Street Extension



UMKC Station Stop View 1



# Plaza Transit Center: KC Streetcar Main Street Extension



Plaza Transit Center View 1



Plaza Transit Center Aerial Rendering



Plaza Transit Center View 2



Plaza Transit Center Ground Rendering



# Plaza Transit Center: KC Streetcar Main Street Extension

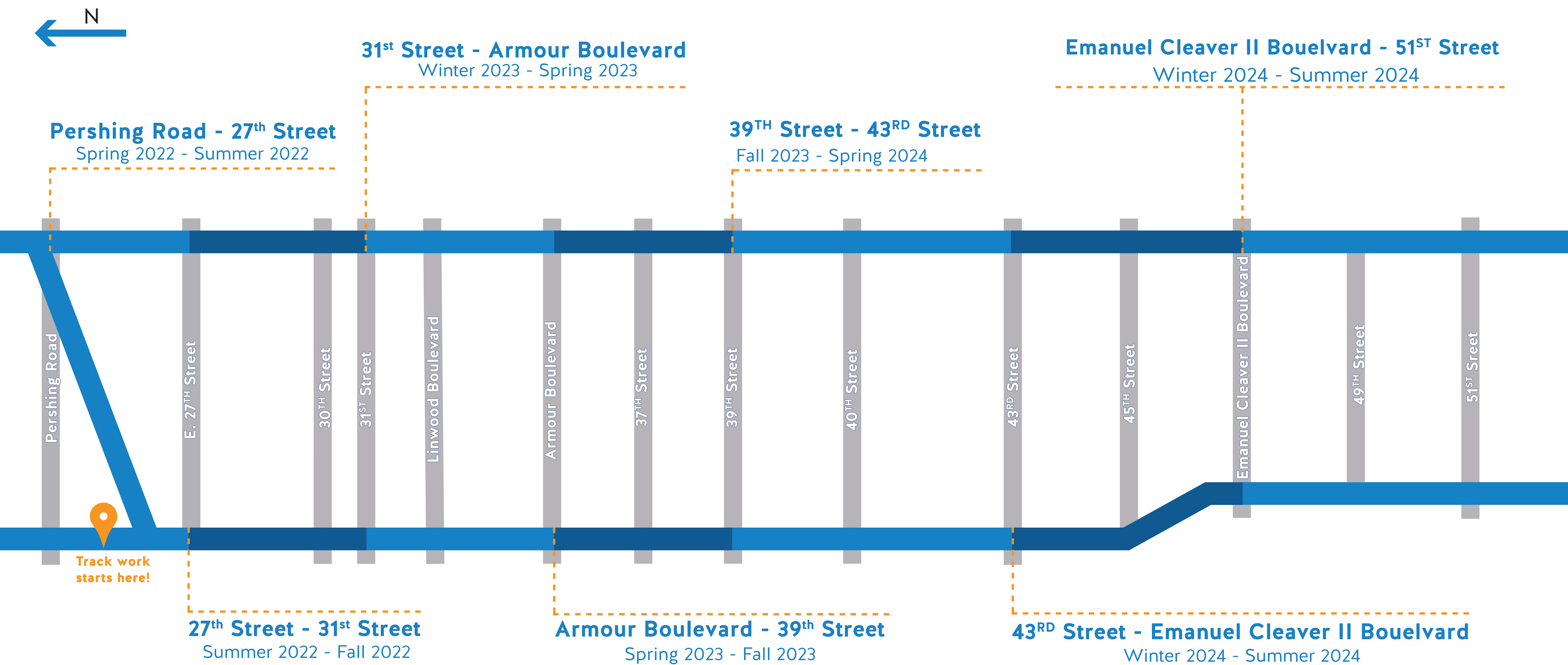


Plaza Transit Center Aerial Rendering



# Track Construction Timeline: KC Streetcar Main Street Extension

Track construction will be segmented and will start on the northern end at Pershing Road & Main Street and travel south. Track construction will take place on one side of the street at a time. Each side is anticipated to take eight weeks to complete. All work is weather dependent and schedules may adjust throughout the project.





# Progress Starts Underground: Upgrades on Main



16

PRIVATE UTILITIES  
relocating

64

Brand new  
FIRE HYDRANTS

190

New and upgraded  
MANHOLES



Approximately 4 MILES of  
new **SEWER MAINS**

Approximately 4 MILES of  
new **WATER MAINS**

Relocating **WATER METERS**  
outside where possible



**KC WATER AND SEWER**  
work anticipated to be  
completed by **AUGUST 2022**

**PRIVATE UTILITIES**  
are anticipated to be  
completed by **SPRING 2022**



# MAIN STREET EXTENSION TO UMKC



## Frequently Asked Questions

### What is the KC Streetcar Main Street Extension?

The KC Streetcar Main Street Extension is a 3.5-mile extension of the existing KC Streetcar System that will connect the current southern terminus at Union Station to the University of Missouri–Kansas City (UMKC) at 51st Street and Brookside Boulevard.

### Who is leading the project?

Construction is being led by the KC Streetcar Constructors, a joint venture between Herzog Contracting Corp. and Stacy and Witbeck, and supported by Burns & McDonnell and JE Dunn Construction. The project is overseen by the joint partnership of the City of Kansas City, Missouri, KC Streetcar Authority, and Kansas City Area Transportation Authority.

### What's happening on Main Street?

There are several key activities that need to be completed to pave the way for the first phase of streetcar-related construction. These activities include relocating existing private utilities, advancing the streetcar design, and the completion of KC Water's "Upgrades on Main" to improve the City's aging water and sewer system.

### What's being completed with this project?

This project will extend the downtown streetcar an additional 3.5 miles south on Main Street, adding 16 stops connecting Midtown, Westport, the Art Museum District, the Plaza and UMKC. The streetcar extension will lengthen the spine of Kansas City's regional transit system and connect to RideKC bus routes throughout the city.

### Where is this happening?

The Main Street Extension will extend from Union Station at Pershing Road and Main Street, south along Main Street to 51st Street and Brookside Boulevard.

### Will Main Street close during construction?

KC Streetcar Constructors are committed to keeping Main Street open for the duration of this project. Part of the commitment to keep Main Street open includes maintaining access to businesses throughout construction and utilizing temporary striping to help traffic best navigate through construction zones.

### What traffic impacts can be expected during construction?

KC Streetcar Constructors identified seven segments along the corridor. The track construction in each segment will be very similar, with one side of the street closed for construction followed by the other side. Track work will start on the northern end of the line at Pershing Road and Main Street and travel southbound throughout construction. See the image below for a view of what the work zones and traffic flow may look like.



Let's get social!  
@BuildKCSC 

[buildKCstreetcar.com](http://buildKCstreetcar.com)

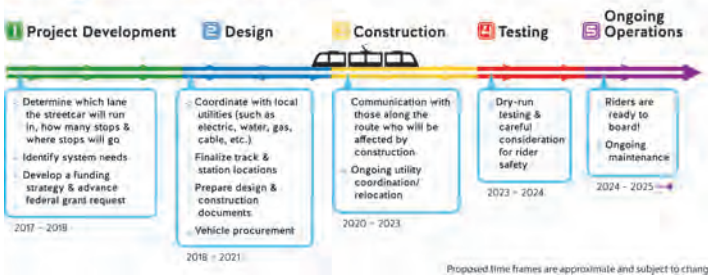






# MAIN STREET EXTENSION TO UMKC

## What was the project process to this point?



## When will we be able to ride the extension?

Let's #RideIn2025! The KC Streetcar Main Street Extension will be open to the public in 2025. There will be a period of security testing prior to the streetcar extension opening to the public.

## How can I stay up-to-date with project progress?

Sign up for Main Street Extension construction updates and traffic impact email here:

<http://www.buildkcstreetcar.com/contact>.

KC Water's Upgrades on Main Weekly Construction Update email newsletter will be the primary construction update communication for Main Street until the end of their work in August 2022.

Sign up for the Upgrades on Main Weekly Construction Update email here:

<http://www.kcwater.us/upgradesonmain>.

## Who do I contact if I have a construction question or concern?

If you have any concerns or questions related to construction, please call the project hotline at 816-337-1013 or email [info@buildkcstreetcar.com](mailto:info@buildkcstreetcar.com).

## PROJECT #FunFacts

### CONSTRUCTION AND DESIGN

- 22% of the extension will be dedicated transit lanes
- Over 1,400 tons of rail
- 342 Overhead Catenary System (OCS) poles
- 5 Traction Power Substations
- Expansion of the current Singleton Yard Maintenance Facility
- Projected ridership for the expanded 5.7-mile route is 12,000 average daily trips
- Plaza Transit Center will accommodate streetcar and bus service as well as bike facilities with a double-sided platform
- Two platforms will be double-sided: The Plaza Transit Stop and the UMKC Stop
- Three crossover points on the extension

### VEHICLES AND TECHNOLOGY

- 8 additional streetcar vehicles, for a total of 14 streetcars
- Updated route technology including a fiber backbone to all extension streetcar station stops
- New passenger information system on board all streetcars
- 360-degree camera coverage on all new streetcar vehicles
- Improved operator assist technology on board
- WiFi on board



A Herzog/Stacy and Witbeck Joint Venture

Let's get social!  
@BuildKCSC

**buildKCstreetcar.com**



# MIDTOWN KC STREETCAR ANNEX

## at 38th & Baltimore

### WHAT is proposed?

The 38th Street and Baltimore Avenue parcel was acquired in 2020 for the purpose of supporting the KC Streetcar Main St Extension and installing a Traction Power Substation (TPSS). TPSS stations are required to power the Streetcar. Because the property was acquired using federal funding for the project, potential land use is limited to streetcar-related functions. In addition to a TPSS site, this property will include a maintenance building, i.e. the Midtown Streetcar Annex. The property will be fenced, screened, and landscaped. The existing sidewalk will be replaced as part of the project.

### WHY is this work being proposed?

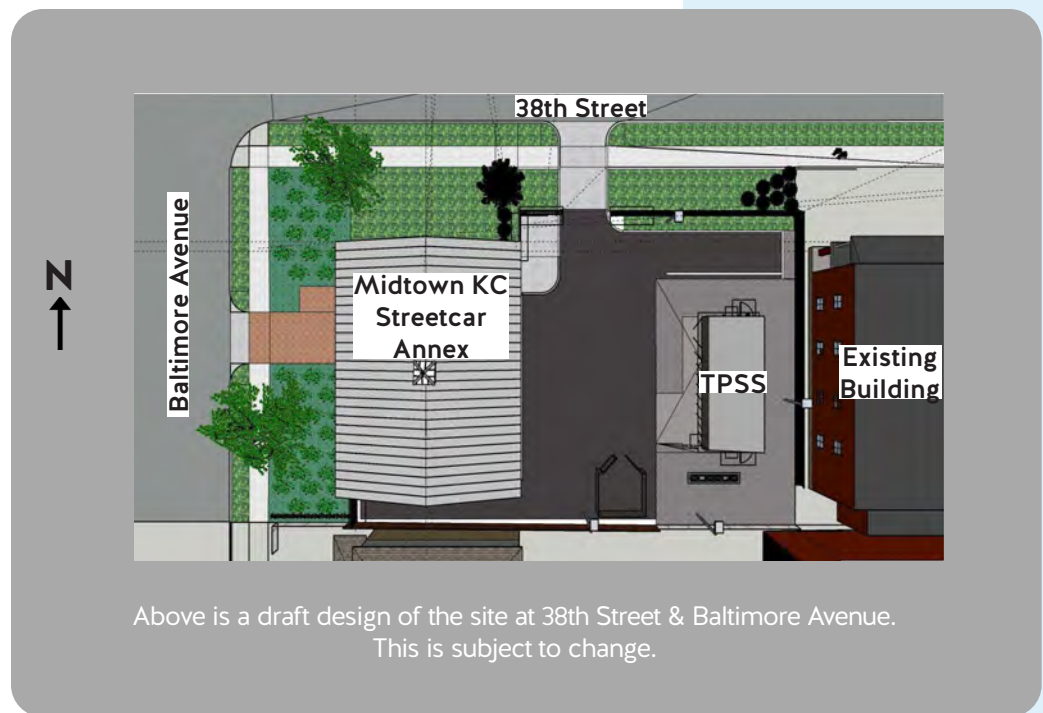
As the KC Streetcar system expands to the south, there is a need for a satellite maintenance and operations facility to support expanded operations and maintenance needs, and to ensure efficient and timely response to needs on the route.

### WHAT activities will occur here?

The Midtown Streetcar Annex will include one of five TPSS sites along the extension. KC Streetcar staff will utilize the building for a small field office to support maintenance-of-way activities, storage of equipment required to support maintenance and operation's needs (such as Brushy McBrushface, and emergency response equipment), and supplies to support maintenance of stations and platforms.

### HOW will this impact you?

The maintenance facility and fencing will occupy approximately two-thirds of the 38th Street & Baltimore Avenue parcel. Streetcar personnel will access the site periodically during streetcar operating hours. The site will have security lighting and the proposed fencing would screen the TPSS site.



For more  
information, visit  
[www.kcstreetcar.org](http://www.kcstreetcar.org)  
or contact  
[info@kcstreetcar.org](mailto:info@kcstreetcar.org)



@KCStreetcar





# Upgrades on Main

## WHY is this work being done?

Upgrades on Main replaces century-old infrastructure and paves the way for the first phase of KC Streetcar Main Street Extension construction-related activity.

## WHAT is happening?

KC Water will be making improvements, repairs and replacements to the aging water and sewer infrastructure.

## WHERE is this happening?

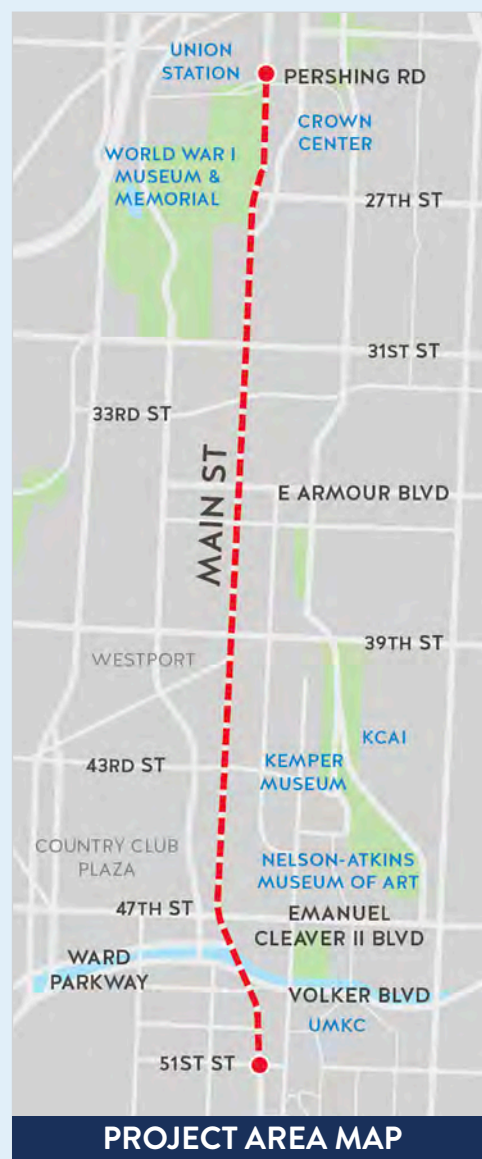
Water and sewer work will take place along the Main Street corridor from Pershing Road to 51st Street. Additional work may need to be completed two to three blocks off of Main Street, in both directions east and west.

## WHEN will this be done?

Construction began January 2021 and will take two years to complete.

## HOW will this impact you?

Temporary construction disruptions such as traffic redirects, street/lane closures and pedestrian detours may impact you at various times.



## STAY INFORMED!

Sign up for the Weekly Construction Update Email  
[kcwater.us/upgradesonmain](https://kcwater.us/upgradesonmain)

HOTLINE: 816-337-1013

EMAIL: [water.upgradesonmain@kcmo.org](mailto:water.upgradesonmain@kcmo.org)

WEBPAGE: [kcwater.us/upgradesonmain](https://kcwater.us/upgradesonmain)

Hotline and email are monitored from 8 a.m. - 5 p.m. M-F





# Upgrades on Main

## Private Utility Companies

While the nature of construction work can look messy, Upgrades on Main is an extremely coordinated project. All 13 private utilities along with KC Water, KCATA and the City of KCMO, meet weekly to coordinate their efforts to best minimize construction impacts along the corridor. KC Water is proud to lead this important communication effort leading up to the start of the KC Streetcar Main Street Extension Project.



**AT&T**



**CenturyLink®**



**Consolidated®**  
communications

**evergy™**

**extenet®**  
SYSTEMS



**Mobilitē**  
powered by IAS

Charter  
**Spectrum▶**

**spire** 

**Sprint**   
Now part of  
**T-Mobile**

**verizon✓**

**Unite**  
PRIVATE NETWORKS

**zayo®**

To learn more about the KC Streetcar Extension project, you can visit [www.kcstreetcar.org](http://www.kcstreetcar.org). To learn more about the KC Streetcar Construction efforts, visit [www.buildkcstreetcar.com](http://www.buildkcstreetcar.com).