

KC Streetcar Main Street Extension Advisory Committee November 2020



Agenda

- **Welcome & Introductions**
- **Project Funding & TDD Update**
- **Project Schedule**
 - Private utilities & KC Water
- **Project Design Update:**
 - Alignment
 - Streetcar Stops
 - VMF Expansion
 - Multi-modal considerations
 - Traction Power Substation (TPSS) General Locations:\
 - Green infrastructure



Project Partners



Public Works Department
City of Kansas City, Missouri



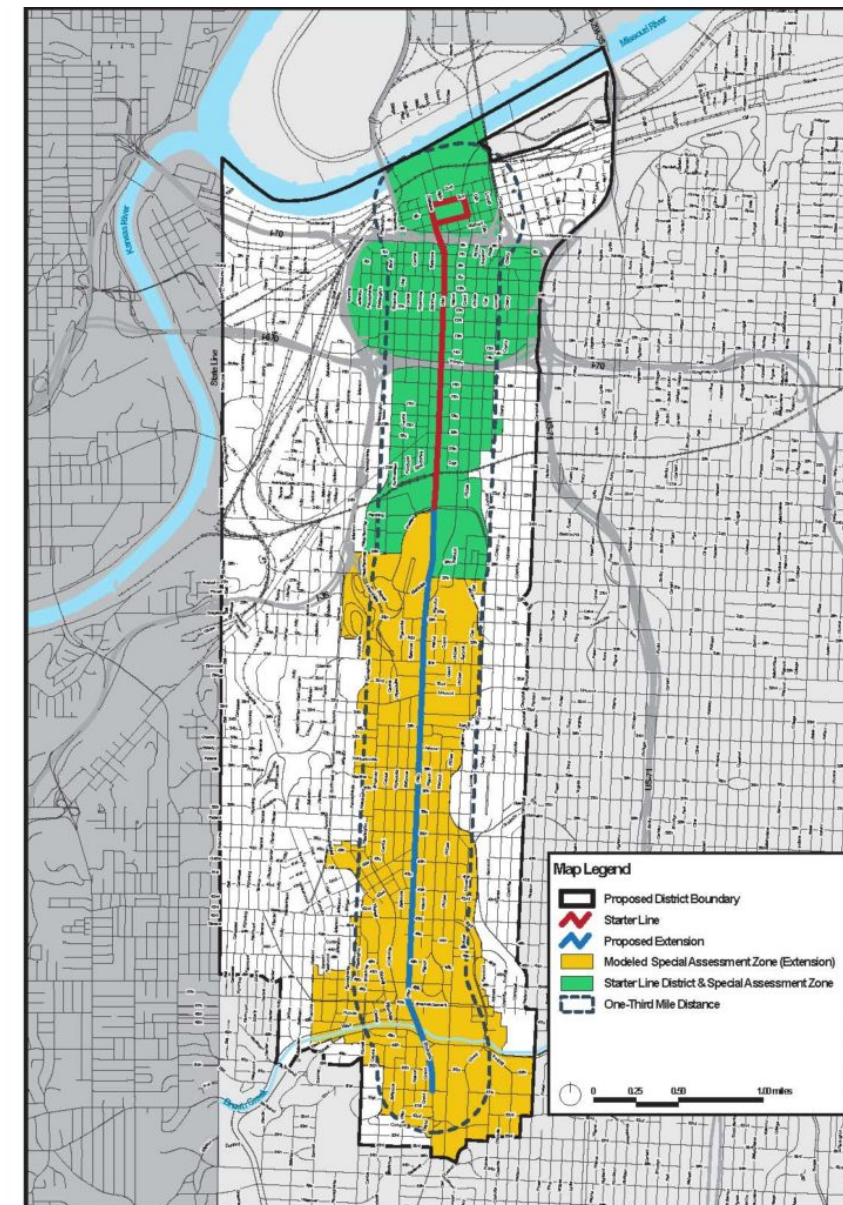
What is the role of the Advisory Committee?

- Assist the Project Management Team with **policy and design decisions**.
- Help **spread information** about the project to your own organizations.
- **Today** – a lot of information. After the first of the year, and as we move closer to full funding of the project, we anticipate having a more consistent schedule for this group.

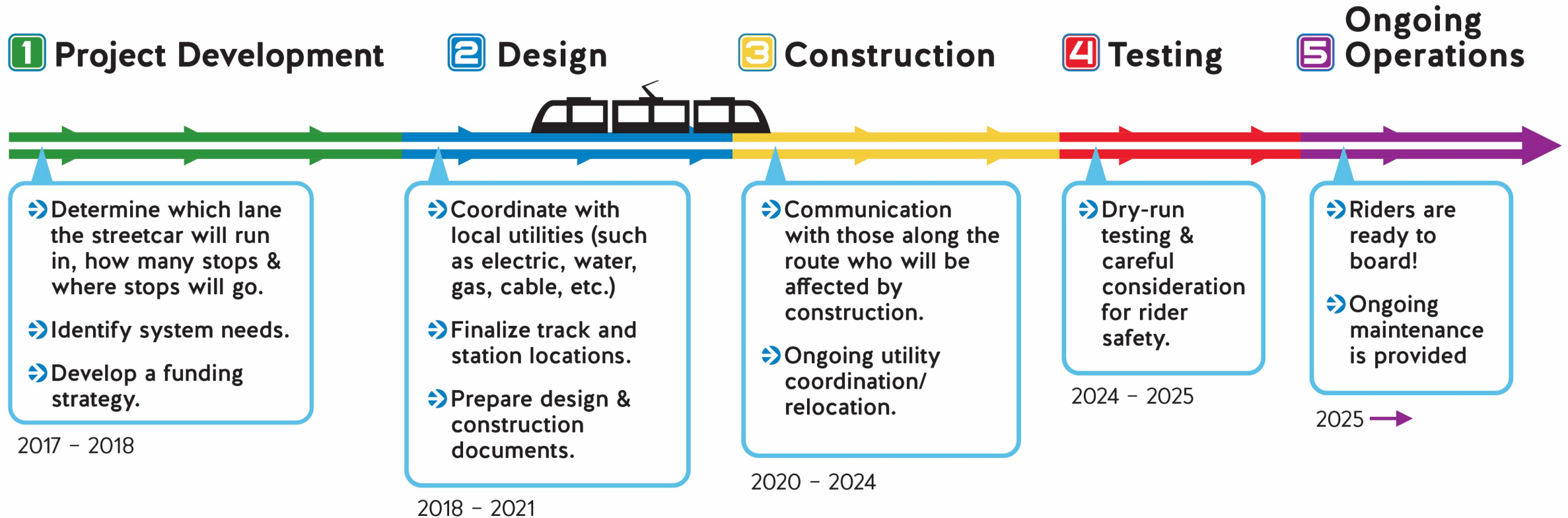


Project Funding & TDD Update

- Funding:
 - Bipartisan support from local officials
 - Received \$50.8M from the FTA in August
 - Allows project to move to final design
 - Anticipate receiving full funding agreement (FFGA) in January
- TDD:
 - TDD activation and transition anticipated in early 2021, subject to Board approval
 - Anticipate property tax assessment to be issued in late 2021
 - Anticipate sales tax assessment starting in mid 2021



Project Schedule Update:



*Dates are subject to change and are shown as projections as of 11/20/20

Private Utility Work

- 15 private utilities working in the corridor at different times and different locations
- Upgrading, relocating their own equipment
- Private utility work will take place throughout the duration of the KC Water work and KC Streetcar construction
- Work will be in waves
- Call **816-337-1013** with issues



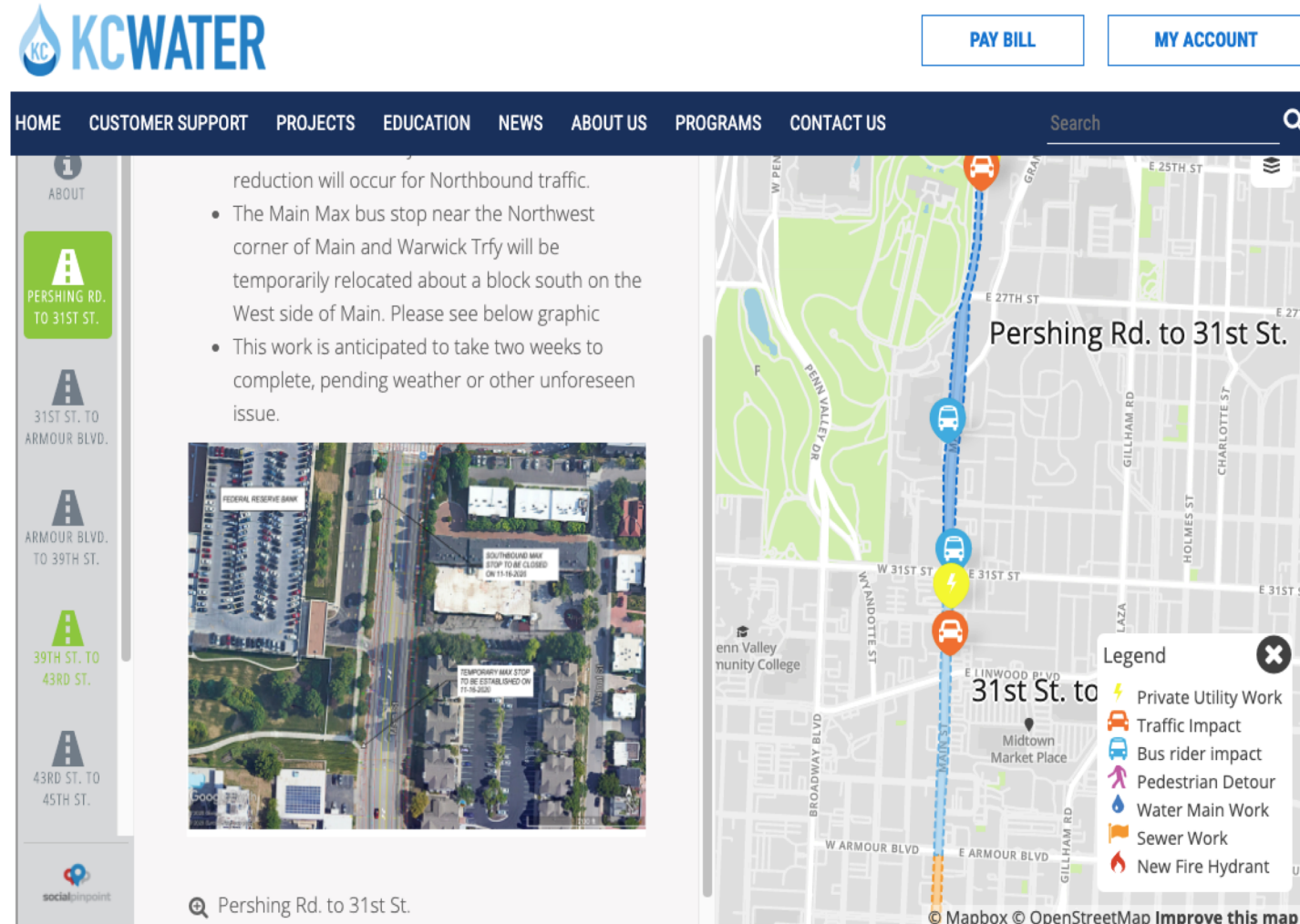
KC Water Upgrades On Main

- Includes watermain replacement and sewer rehabilitation work
- Projected to take two years to complete
- Preconstruction to begin first week of December
- Groundbreaking anticipated early January 2021
- Work will occur on multiple blocks at once
- 31st and Broadway Sewer Separation project anticipated to begin in January 2021 – more info coming soon!



Stay Informed (KC Water & Private Utility)

- Hotline: 816- 337-1013
- Email: water.upgradesonmain@kcmo.org
- Project Webpage: kcwater.us/upgradesonmain
- Weekly Construction Update
- Small group presentations
- Social Media: @KCMOWater



The screenshot displays the KC Water website interface. At the top, the KC Water logo is visible alongside navigation links for HOME, CUSTOMER SUPPORT, PROJECTS, EDUCATION, NEWS, ABOUT US, PROGRAMS, and CONTACT US. A search bar is located on the right. Below the navigation bar, a sidebar on the left lists project segments: PERSHING RD. TO 31ST ST., 31ST ST. TO ARMOUR BLVD., ARMOUR BLVD. TO 39TH ST., 39TH ST. TO 43RD ST., and 43RD ST. TO 45TH ST. The main content area features a text update about traffic impacts and a graphic showing a temporary bus stop relocation. To the right, a map highlights the project area from Pershing Rd. to 31st St. with a legend for Private Utility Work, Traffic Impact, Bus rider impact, Pedestrian Detour, Water Main Work, Sewer Work, and New Fire Hydrant. The map is credited to Mapbox and OpenStreetMap.

KC WATER

[PAY BILL](#) [MY ACCOUNT](#)

HOME CUSTOMER SUPPORT PROJECTS EDUCATION NEWS ABOUT US PROGRAMS CONTACT US Search

ABOUT

PERSHING RD. TO 31ST ST.

31ST ST. TO ARMOUR BLVD.

ARMOUR BLVD. TO 39TH ST.

39TH ST. TO 43RD ST.

43RD ST. TO 45TH ST.

socialpoint

reduction will occur for Northbound traffic.

- The Main Max bus stop near the Northwest corner of Main and Warwick Trfy will be temporarily relocated about a block south on the West side of Main. Please see below graphic
- This work is anticipated to take two weeks to complete, pending weather or other unforeseen issue.

FEDERAL RESERVE BANK

SOUTHBOUND MAX STOP TO BE CLOSED ON 11-16-2022

TEMPORARY MAX STOP TO BE ESTABLISHED ON 11-16-2022

Pershing Rd. to 31st St.

Legend

- Private Utility Work
- Traffic Impact
- Bus rider impact
- Pedestrian Detour
- Water Main Work
- Sewer Work
- New Fire Hydrant

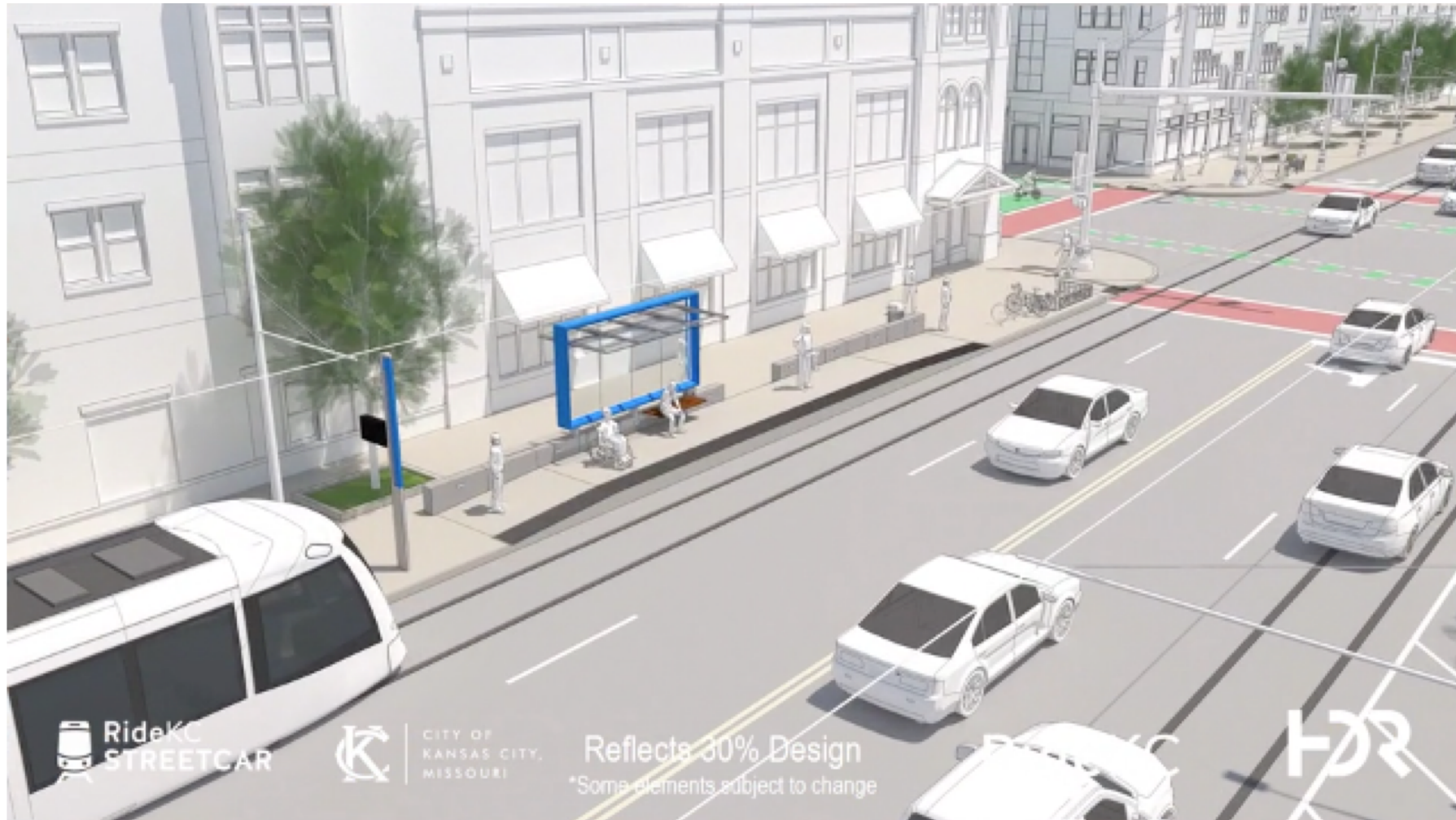
© Mapbox © OpenStreetMap Improve this map

Project Design Updates: Alignment

- 3.48 route miles of new revenue service
- 15 new stop platforms at 9 stations
- Most of the west curb line is unprogrammed space
- At the end of today's presentation, we'll open the plot map and show where on-street parking will be located.



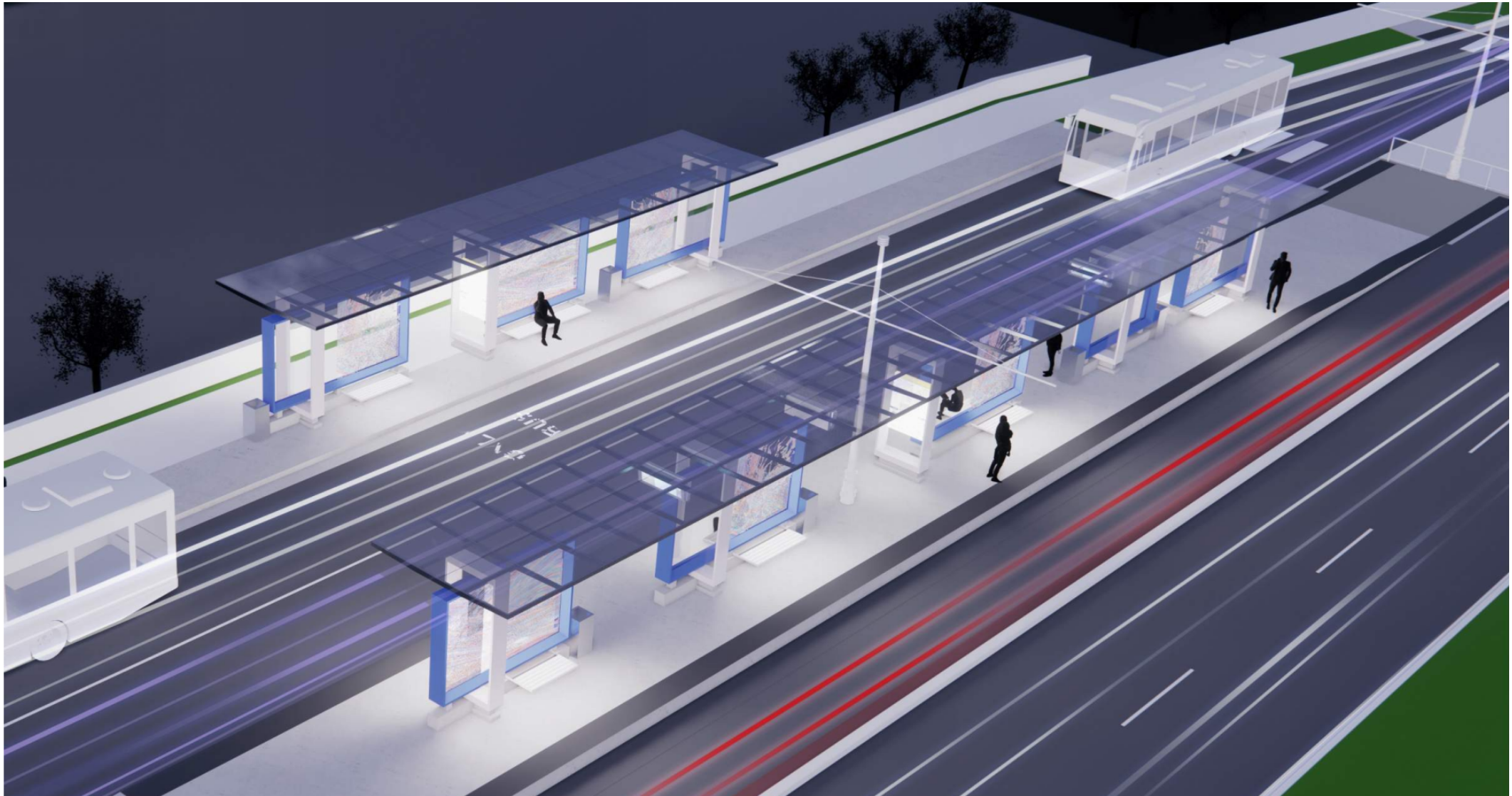
Project Design Updates: Base Station Stop



Signature Stops: Plaza “Gateway”



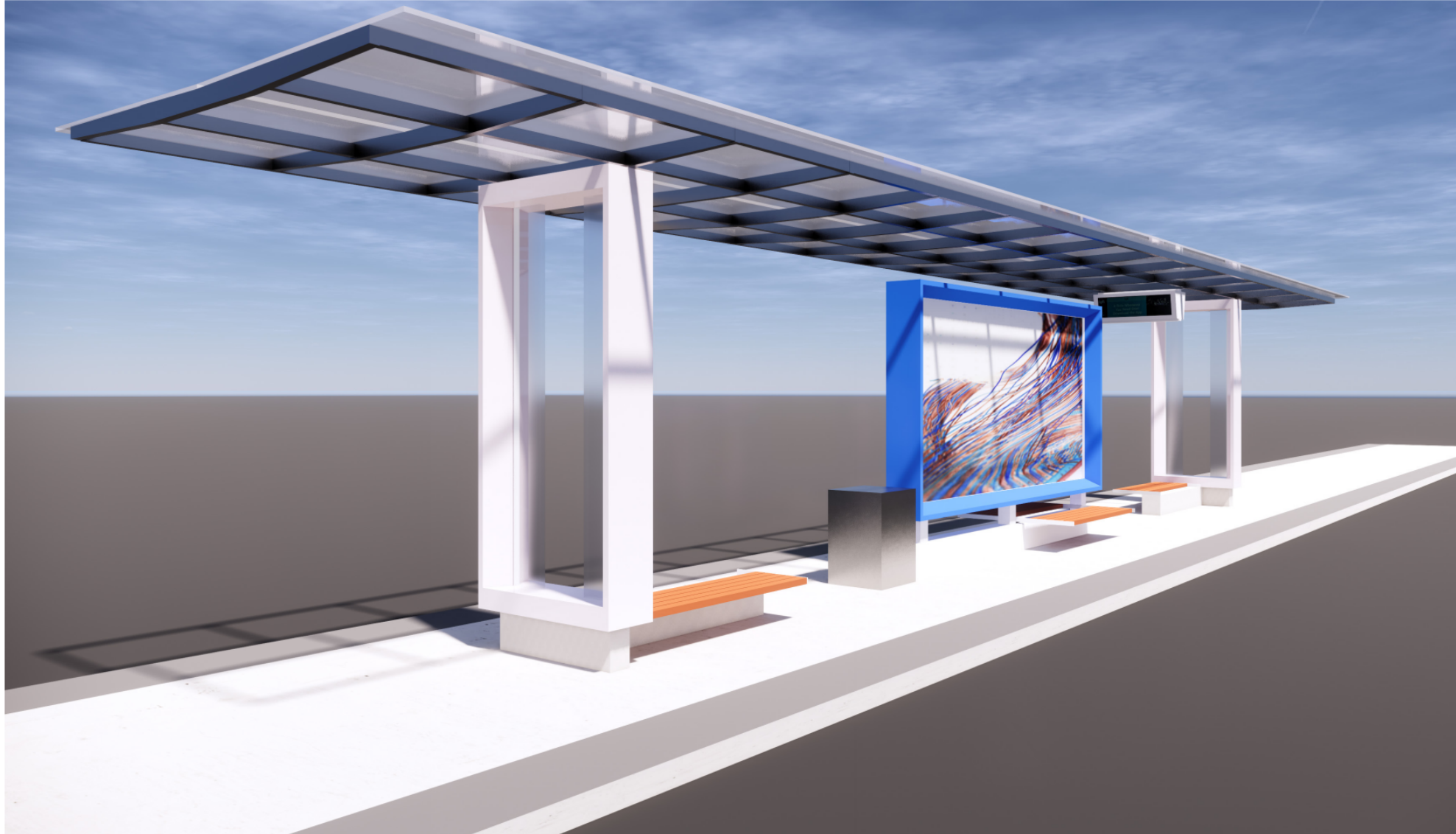
Signature Stops: Plaza “Gateway”



Signature Stops: Plaza “Gateway”



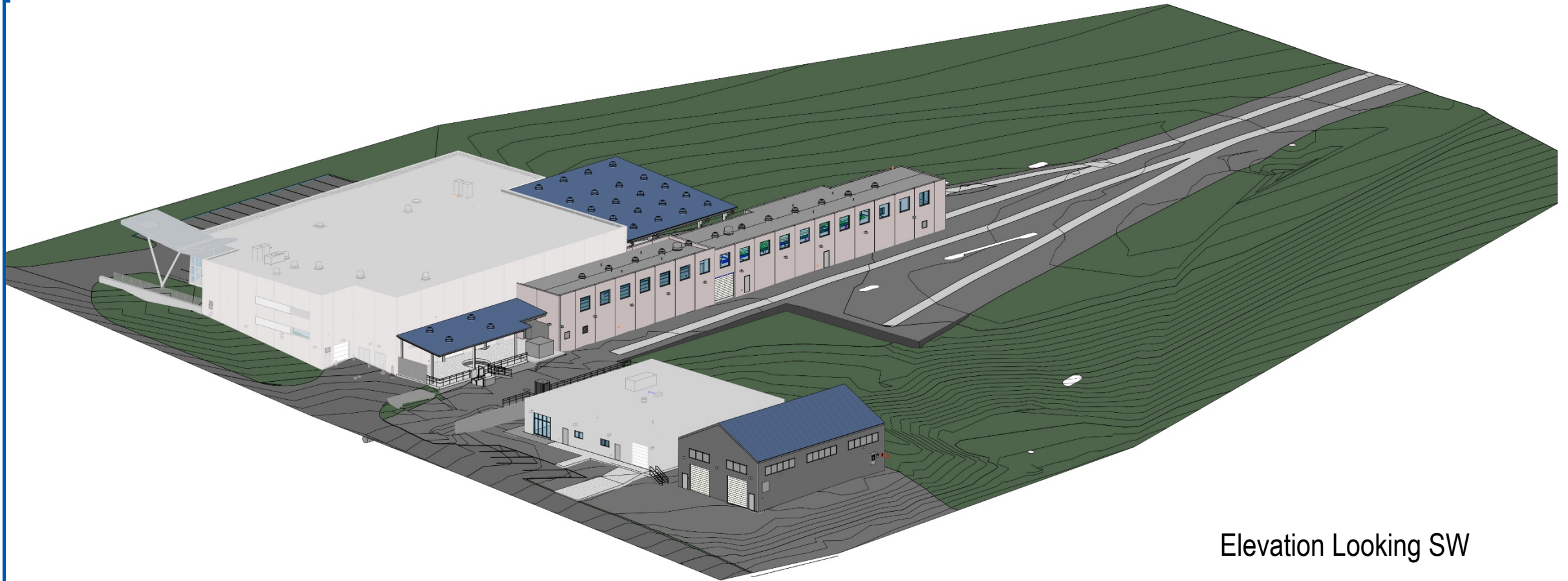
Signature Stops: UMKC



Signature Stops: UMKC



Vehicle Maintenance Facility (VMF) Expansion



Elevation Looking SW

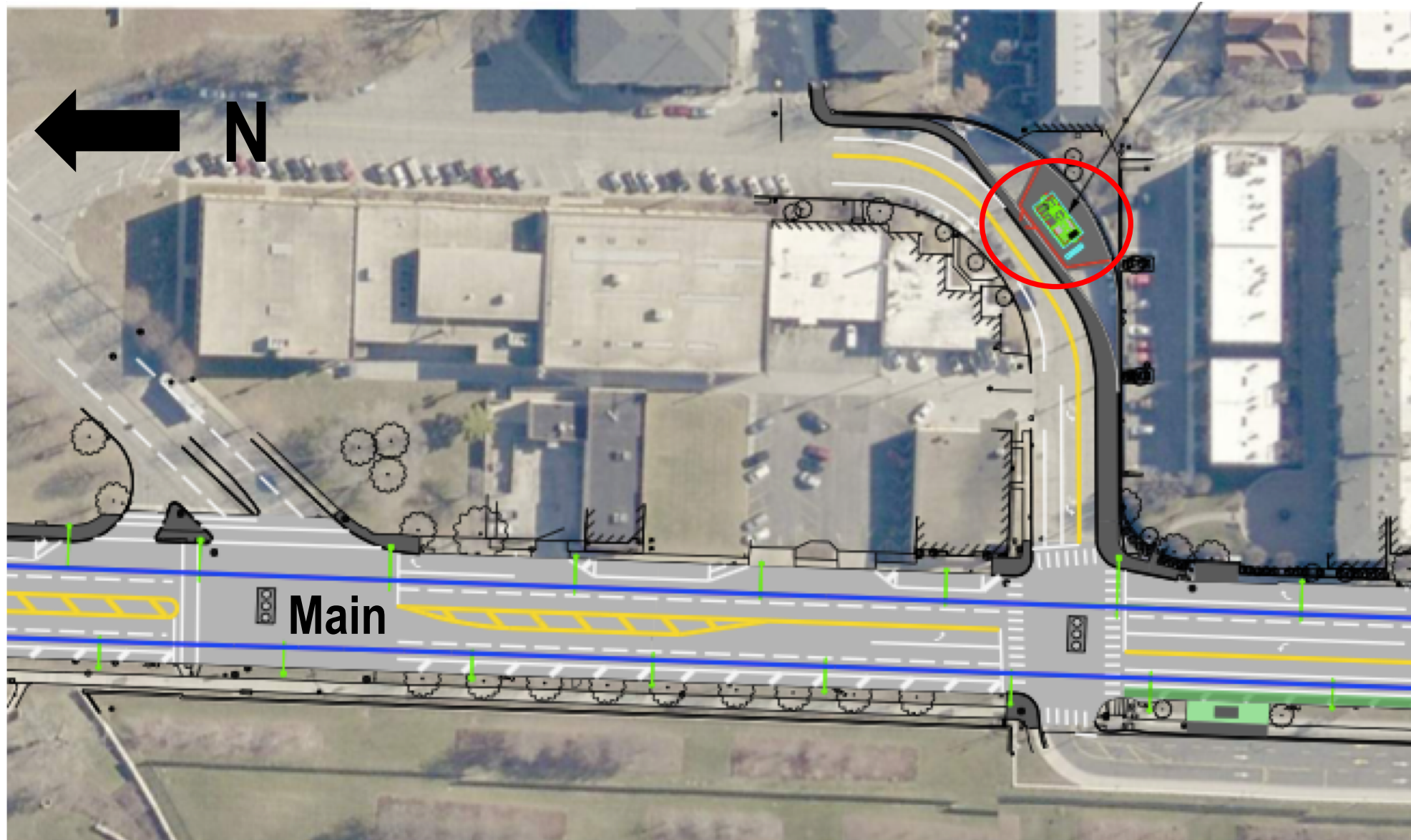
Mobility Lane Opportunity: Pershing – 27th



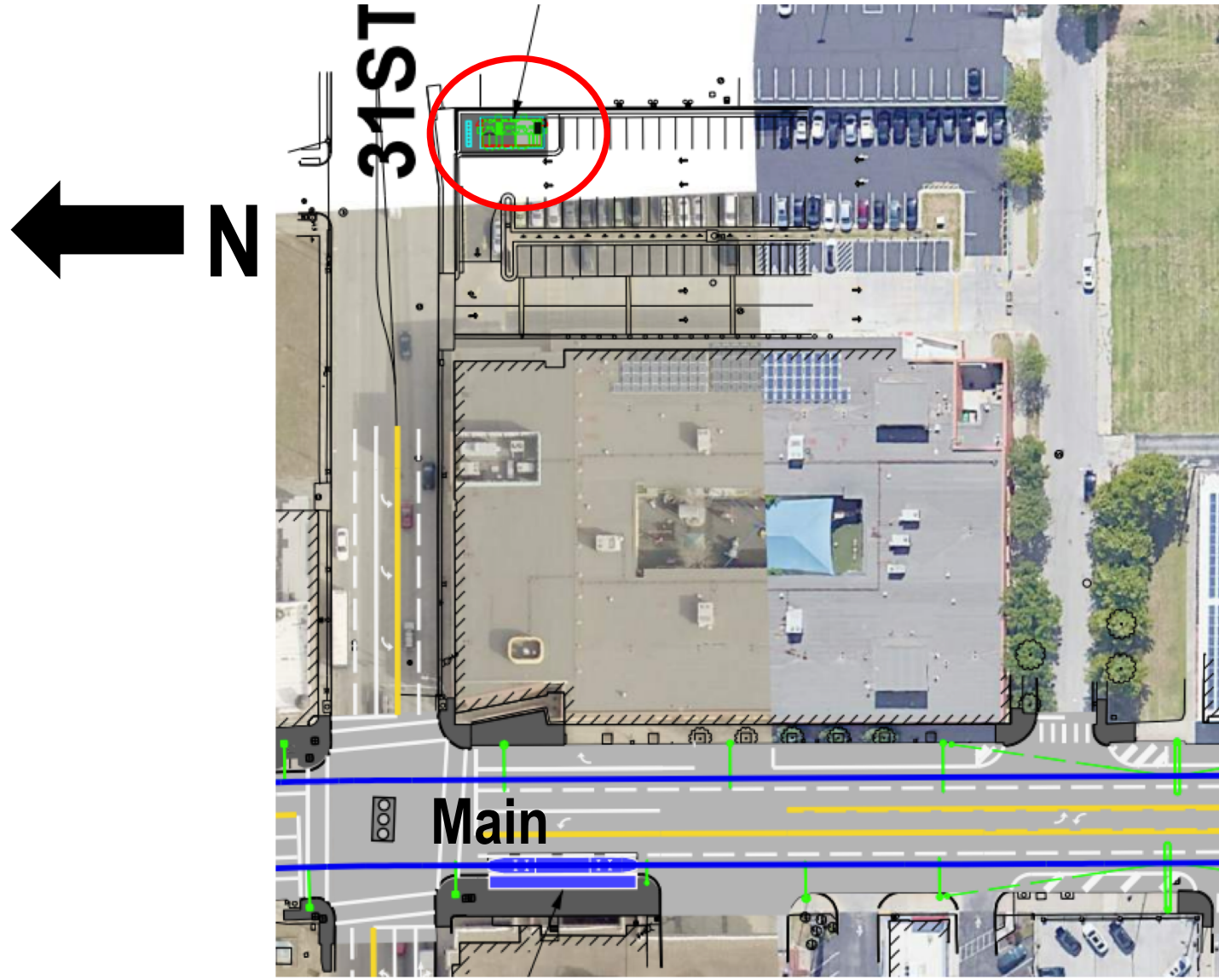
Traction Power Substation (TPSS) General Locations:

- Southeast corner of Warwick Trafficway
- South side of 31st Street
- Southwest side of 38th Street
- Northwest side of 44th Street
- East side of Brookside Boulevard

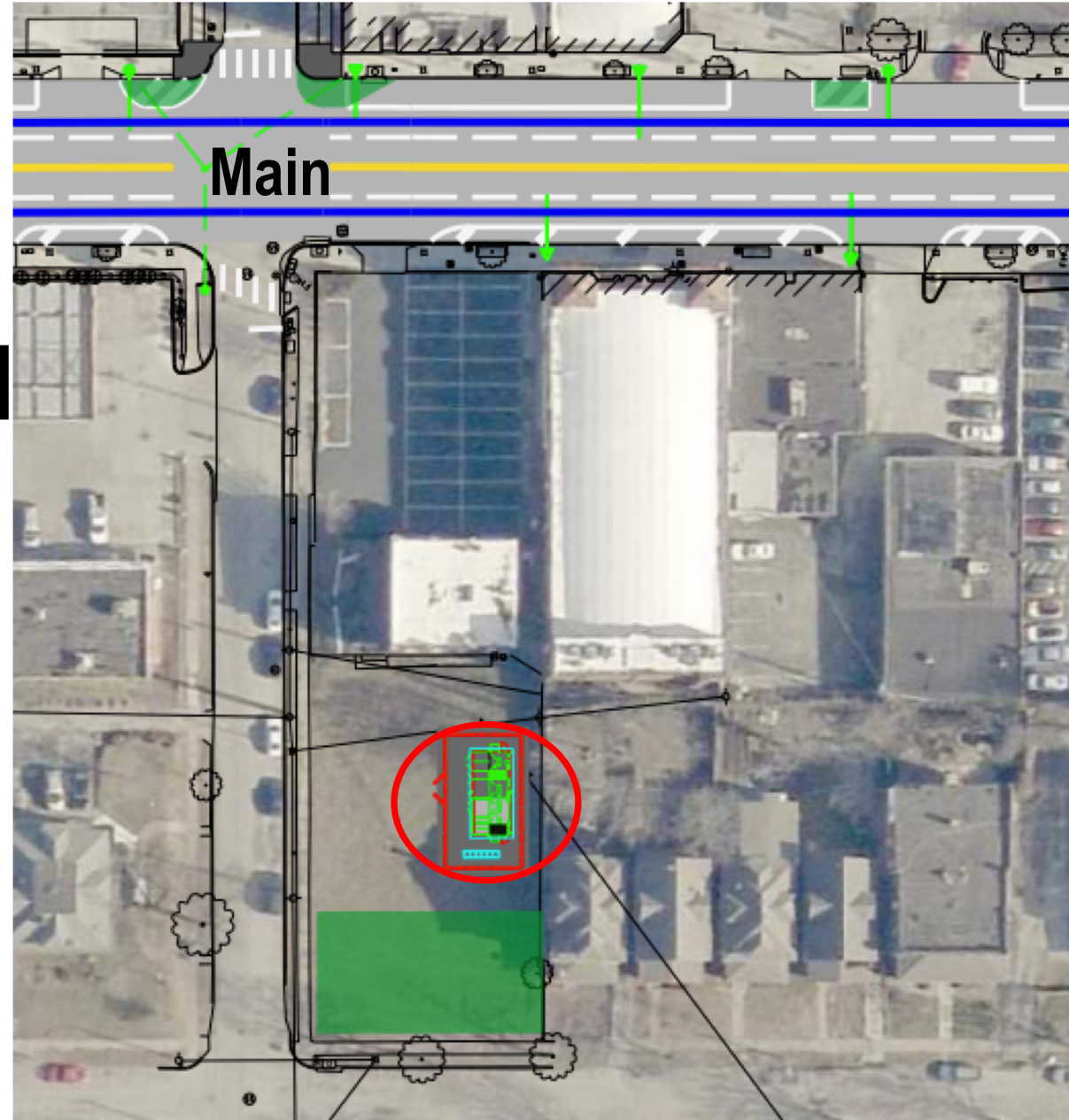
TPSS Locations - Warwick Trfy



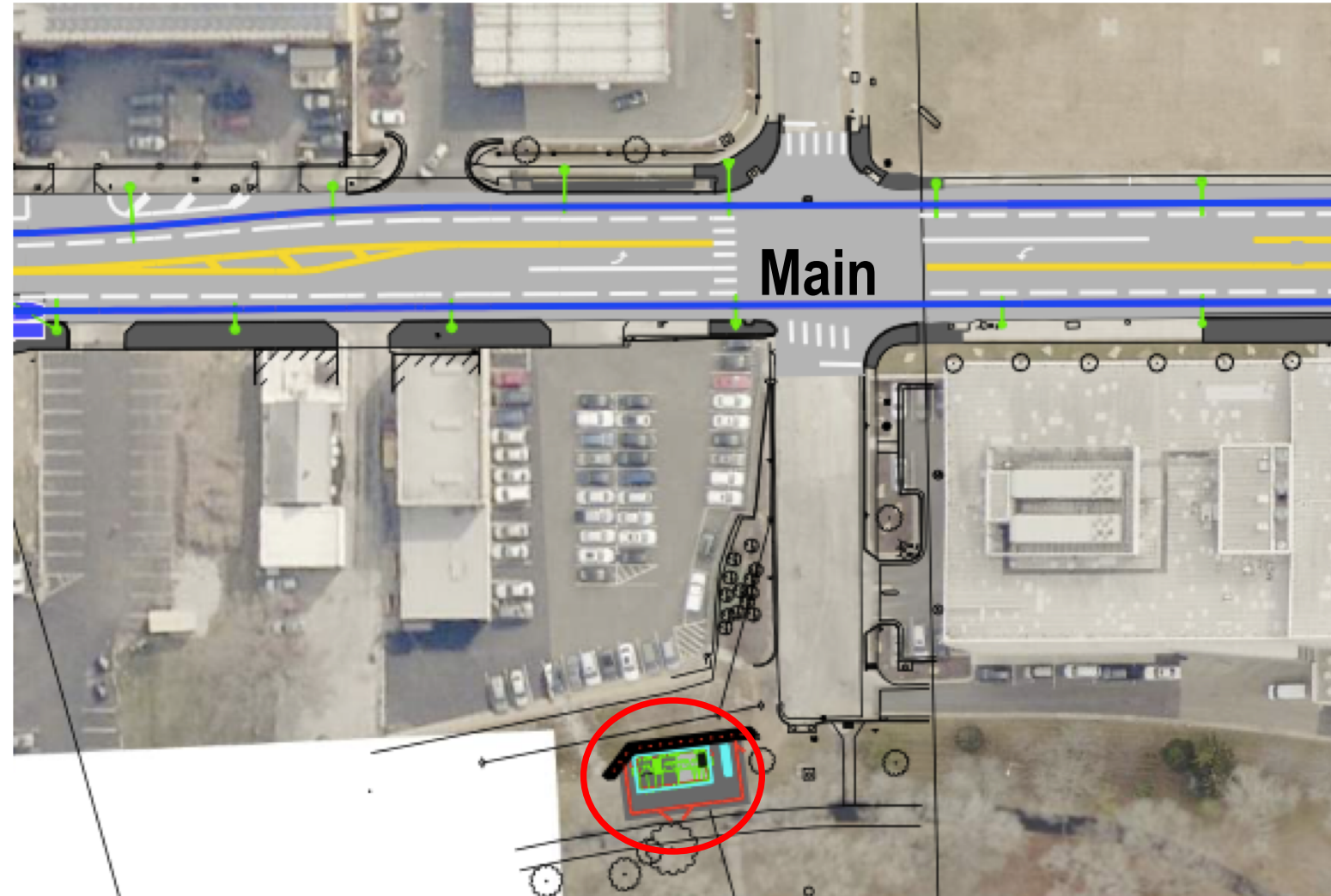
TPSS Locations - 31st Street



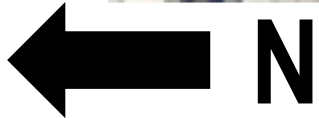
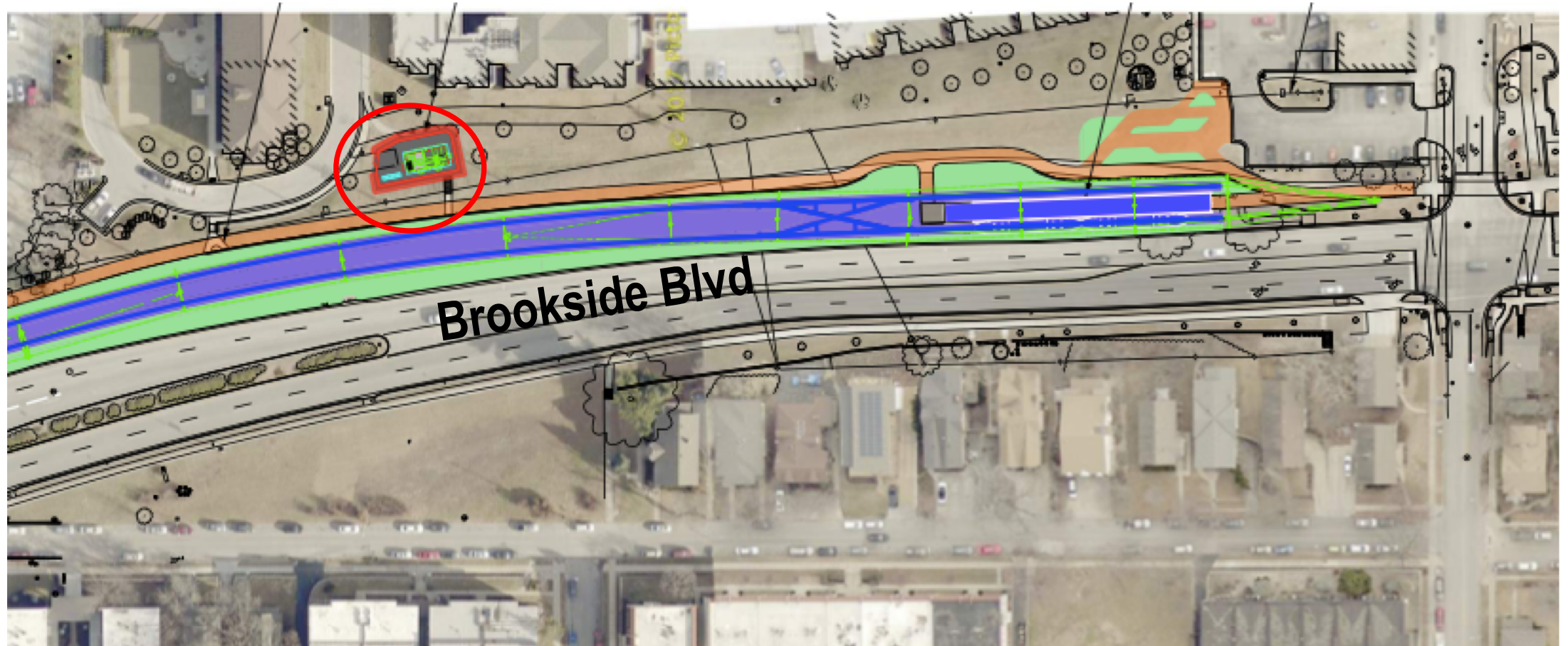
TPSS Location - 38th Street



TPSS Location - 44th Street



TPSS Location -Volker



- PMT is working with KC Water to identify potential GI opportunities
- At the end of today's presentation, we'll open the plot map and show where potential GI locations are located



Questions?

